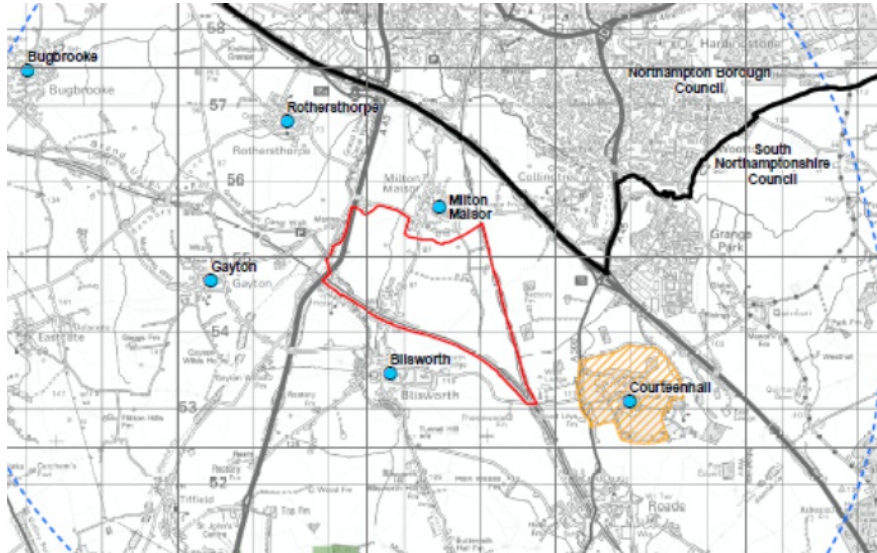


**Our Community under threat**



Having just fought off the Howdens proposal the village is under threat again.

A developer, Ashfield Land is proposing to build a Rail Freight Terminal (RFT) in Milton Malsor Parish. Over the past few years Ashfield has purchased or acquired options on almost all of the open land between Milton Malsor and Blisworth. Whilst it will be about a year before Ashfield submit a formal planning application they have produced some draft proposals which show a number of railway sidings on the Northampton loop line, approximately 8million square feet of Warehouse/Distribution buildings (more than 3 times the size of the Howdens proposal) a lorry park, car parks plus Hotel, Pub and Restaurant. A total workforce of approximately 8,000 is projected.

Should this proposal ever get the go ahead almost all the land between our village and Blisworth would become a vast industrial estate served by a new roundabouts one on the A43 and one on the Milton to Blisworth road.

During the construction phase the village would suffer from noise, dirt and dust in addition to construction traffic travelling through. Once constructed RFT's operate on a 24hour 7days a week basis so we would suffer constant noise from trucks and containers being moved off trains and around the site, night time security lighting, and a vast increase in traffic through the village (and no doubt more accidents). At least 13 huge warehouses would destroy the view and all the footpaths from Milton to Blisworth and Gayton would be closed.

Continued over..

Some of your Parish Councillors attended a meeting in Blisworth (along with at least 200-300 Blisworth residents) on Monday 4<sup>th</sup> January and an Action Group has been formed to fight this proposal. If you wish to help in anyway please speak to a member of the Parish Council. Assistance from anyone who has particular knowledge of Highways and transport, drainage and flood risk, noise or air pollution would be especially welcome.

We must emphasise that this really is a major threat to the village, as this proposal is classed as a Nationally Significant Infrastructure Project and as such the decision as to whether it goes ahead or not is made by a Secretary of State in Westminster following a recommendation by the Planning Inspectorate.

Please come along to the Village Hall on Saturday 16<sup>th</sup> January 2016 from 1.30pm to 3.30pm to view the plans that are currently available. Members of the Parish Council will be in attendance.

*Ann Addison*

Clerk to Milton Malsor Parish Council

10<sup>th</sup> January 2016