



*Milton Malsor News*  
*Issue 80*  
*Summer 2023*





## *CHAIRMAN'S REPORT Summer 2023*



**A**t last, some sun, well a bit anyway.... hopefully we'll see a lot more of it over the coming weeks. This is year 2 of my service as Chair of your Parish Council and in the last year, we've experienced and continue to experience so much. A cost-of-living crisis, the death of Her Majesty Queen Elizabeth II who has been a constant in almost all our lives and, the coronation of our new King, His Majesty Charles III. I must be getting old as I would like everything to slow down a bit so I can catch my breath! Below is a general update over the last quarter and the last year:

**Segro: Northampton Gateway J15 M1** – this year whilst we have been notified of several applications which, for the most part, are procedural there have been two applications that we considered to be contrary to the purpose and the spirit of the original application for the necessity of building another Rail Freight Terminal so close to DIRFT.

- SEGRO applied for an alteration of the original planning application so that a warehouse could be built several metres taller than the maximum stated/allowable height to satisfy a business's demand for the installation of equipment. This equipment was so that the warehouse would be virtually fully automated.
- There was an Application for Non-Material change so that warehousing can be built and occupied before the railway for the Rail Freight Terminal is completed. Presumably those business don't require access to the Rail Freight Terminal and will probably never require it. Regrettably, despite formidable objections raised by the Parish Council, the above applications were allowed despite being in complete contradiction to the original grounds for application.

**Village Park** – monthly checks of the equipment and play areas are undertaken and steps taken to repair and maintain whenever and wherever possible. The Parish Council is aware of the rising costs in the current climate but remain committed to ensuring a safe and pleasant area for our children to play and families to meet.

**Village Speed Limits** – at various times over the years the Parish Council has made application to seek to reduce speed limits to 30mph on the Towcester Road and to introduce measures to inhibit/reduce the speed of traffic on the Collingtree Road.

We made enquiries regarding the speed of traffic by the Village Park, but we've been told by Highways that given the topography we cannot have speed humps. A chicane has been suggested but that would cost in the region of £50,000 which is unaffordable.

We have recently learned that our request to move the 30mph sign on the Collingtree Road to the other side of the railway bridge is to be considered as part of a consultation process. We hope to be able to update you all shortly.

Our application regarding Towcester Road has been rejected despite two more recent crashes by the Malzor Lane turnings due, in part, to excessive speed. A full notice regarding this matter was posted on our FaceBook page on 20 March 2023.

### **Dog Fouling:**

Thank you to all dog owners for cleaning up after your furry friends. We've tried to keep the bins empty for you and if you do come across a full doggy bin, please do let us know so that we can take action to have it emptied.

### **Weeds in pavements**

I mention this because it has been raised that, for instance, by many kerbstones' weeds have sprouted up making the road and paths look unsightly. I do agree that the tax we pay should cover work of this nature but the simple fact of it is that right now, it doesn't.

But we could grumble and moan whilst watching the weeds grow, or we could spend just a few minutes clearing the few feet in front of our houses (for those of us that can) so that we try to keep the village looking as good as it can through these hard times. If anyone needs help because you're unable, then give me a call and I'll come round with a shovel, and we can have a chat over a cuppa.

### **Medicine Collection contacts:**

Nicola James – 07989 307670, Jacquelyn Jones – 07728 027507 and Katie Marshall – 07792 842358

It would be great to hear from you if you have any ideas that you think could add value to Milton or if you see anything that needs attention. You can attend our monthly meetings or if you would prefer, you can ask any one of your Parish Councillors to bring your ideas or concerns to the fore.

**Simon Jones**



Our wonderful village came together again to celebrate the King's Coronation with the national 'Big Lunch' on Sunday 7th May. Families and friends joined together at Milton Football Club, laughing, singing and dancing whilst eating wonderful picnics and drinking a toast or two.

The bouncy 'Windsor Castle' was a big hit with the kids, whilst the throne and Their Majesties provided silly photos aplenty. It was a fantastic day enjoyed by everyone young, old and everything in between, all adding their handprints to our beautiful Coronation Tree. Even the sun made a surprise visit for the day, a truly warming village party to remember for ever.

Huge thanks to everyone that helped make it special.

#### Annie Bass









## YOUR VILLAGE HALL

AGM : Our AGM was held on Friday 28th April 2023, where we presented our yearly accounts, and welcomed representatives from the Parish Council, WI, Art Group, Indoor Bowls and Badminton. Unfortunately, Brownies, Scouts, Mums & Tots and our regular dance groups were unable to attend, or send a representative.

MANAGEMENT TEAM - All key officers & Trustees remain, as follows: Julie Tite (Chairman), Andrew Eames (Treasurer), Keith Parker (Secretary), Heather Mair (Bookings Officer), Pat Parker (Trustee), Michael Tite (Trustee), Kerry Devine (Management Committee), Chris Eads (Management Committee).

RATE INCREASE - The increase in hire rates, for the first time in over five years, has helped us break-even in the last financial year. However, there are concerns that some of our local groups will be unable to continue unless they increase their membership numbers. This will obviously have a knock-on effect to our finances if this happens.

Our Indoor Bowls Group would welcome new members. Sessions are weekly on a Tuesday from 2pm-4pm. Please contact John Brice on 01604 858418 for more details.

MAINTENANCE - our central heating boiler needs replacing and we hope for this work to be carried out late spring/early summer of this year.

COMMITTEE SUPPORT - I wrote in the last newsletter that the village hall management committee are looking for additional members to join us, to not only continue to provide a multi-use space for our village and local area, but develop our hall into a community hub, as was originally intended when it was built.

We don't have regular community events (Quiz Night, Bingo, etc.), we don't have a coffee shop, we don't have a library, but we could if enough people got behind these ideas, and developed them. Are you passionate about getting involved and putting the community back into our village hall? Your management committee are always happy to discuss ideas. Please contact Julie Tite on 07854 366803 or email [juliet.mmvh@gmail.com](mailto:juliet.mmvh@gmail.com)

Our next meeting is on Tuesday 25th July at 7:30pm in the James Room, Milton Malsor Village Hall.



## Milton and Collingtree WI

At our Annual Meeting in March, Brenda Jenks stepped down as President and we are delighted to say that Jacqui Jones has become our new President. Following the Annual Business John Brice's presentation 'Down your Way'; a potted history of Milton Malsor was well received along with delicious refreshments made by two of our members.

April saw us, once again, being creative. We met in the 'Village Room' in Collingtree and were guided through the craft of needle felting by Michelle. It was a therapeutic evening chatting and learning all about needle felting with everyone producing a lovely heart keyring.

May was another successful evening with Belinda from Stonyfield Wine in Blisworth speaking on the history of the vineyard and the wine making process.

Members enjoyed a tasting session (well who wouldn't) and almost everyone left in a 'sparkling' mood!



The June meeting in Milton Village Hall on Thursday 8th, will be led by Jane Treharne who will be demonstrating flower arranging without the use of Oasis.

Oasis is plastic based and we look forward to participating and learning how to create arrangements without this material. A small contribution towards saving our planet.

We are a warm and welcoming group of ladies, come along and see what WI has to offer.

**Contact Jacqui 07728 027507 Or Brenda 858866 for more information.**

## FARMING IN MILTON MALSOR

The Treharne family have farmed in the village since the mid 1950's. There are two farms; Lodge Farm on Barn Lane and Spring Farm on Lower Road. There are currently 3 generations living between the two farms. They are run by Gordon, John and David with the support of their wives Jane, Katy and Ally. Freddie (3.5 years old) runs his own farm on the living room floor.

We are a mixed farm meaning that we have both livestock and arable (crops). We grow wheat which we sell to Heygates in Bugbrooke who use it to make flour and bread. The Barley we sell will be used to make beer and the other crops we grow will be used to feed the livestock over the winter months. We supply Morrisons with beef and the lamb goes all over the country.

Spring on the Farm is a busy time we have calved 48 cows we are waiting for the last two to calve and John has Lambed 400 ewes (female sheep). You will currently see a lot of lambs and some calves down and around Barn Lane. You will see that the sheep and lambs will have matching marks on their sides, this is so we can identify which lambs belong to which ewe. Ewes that have had only one lamb will not be marked with anything, twins will have numbers and Triplets will have letters. The bulls have gone in with the cows, to produce the next years calves. And David has been busy spring drilling (sowing seeds) that will grow and be combined around August. Gordon has been keeping a eye on and feeding all the livestock that is out in the fields.

Over the next few weeks we hope that the weather will allow for us to harvest the grass that we have grown this provides a further food source in the form of silage and hay for the Cows over winter.





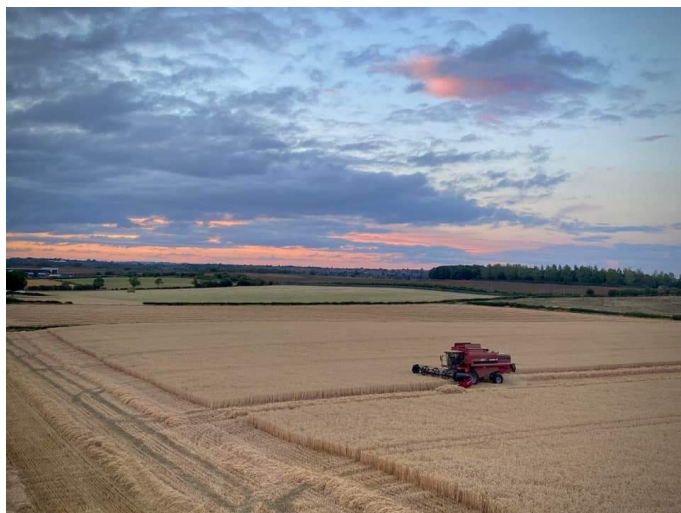
The sheep will also have their yearly hair cut, this provides them with a bit of relief from the warmer weather and it also prevents them getting ill from fly strike and maggots. Wool over the years has decreased in price, it costs more to shear them than what we get paid for the wool. This on a personal note seems crazy as we are looking to use sustainable products with no waste, and this is exactly what wool can do. wool has many uses including clothing, insulation, bedding, and carpets. It also contains Lanolin, Lanolin and its many derivatives are used extensively in both the personal care (e.g., high value cosmetics, facial cosmetics, lip products) and health care sectors such as topical liniments. Lanolin is also found in lubricants, rust-preventive coatings, shoe polish, and other commercial products. To extract the lanolin; the wool is washed with a specific detergent. Wool is actually waterproof until the Lanolin is removed. Wool also decomposes.

So why do we not use it more?

Over the next few months, we will see both lambs and calves grow, the crops flourish ready for the combine to make an appearance.

Be sure to give us a wave, if you see us around the village.

*Alison Treharne*





## *MILTON MALSOR POORS TRUST*

The Milton Malsor Poor's Trust dates back to the 18th Century and has long since outlived its real purpose to provide bread and coal for the needy of the village at Christmas time. The old custom is kept alive in recent times by giving a small cash payment to those residents of Milton Malsor who are in need.

The Trust is looked after by 3 Trustees; The Rector of Holy Cross Church and two Representative Trustees.

Funds are generated for the trust by renting out a small parcel of land that is owned by the trust.

Tara and Alison took on the role of trustees in the latter part of 2022 and have tried to raise the profile of the trust. A unique opportunity to name a bull and go on a farm Safari raised £53.71. We now have "Derek" the Bull...!, And the farm Safari will be happening in the next couple of weeks.

15 residents of the village benefited at Christmas with a cash donation.

The beneficiaries were invited to a coffee morning in April which was well attended and a great success which was funded by the money raised by Derek the Bull. So thank you to all those that got involved. Look out for a further fundraiser later in the year.

### *Introducing Derek the Bull*





**NEED YOU!**

Collingtree & Milton Malsor Scouts started in the village of Collingtree 52 years ago, throughout these years we have seen many changes, the introduction of Cub Scouts, followed by Beavers and then we welcomed Girls. Hundreds of young people have progressed through the group learning new skills, being part of a team, having fun, and gaining awards such as the coveted Kings Scout Award and Gold DofE award.

When Scouts leave the group and venture into the workplace or university mentioning their time in Scouting on their CV goes a long way with employers, as time spent in scouting shows commitment, that they are able to work as part of a team and are capable of decision making. Many Scouts have furthered their careers with skills learnt in scouting, by joining the Armed Forces, working in Government, and joining the Legal profession to name a few.

Help our Young People reach their potential, you don't have to be another Bear Grylls just join in with us have and have fun, pass on your knowledge and help the young people learn skills for life.

Come along and see what we do, help out, get involved and decide if volunteering is for you, we just want your enthusiasm to help and support the group to continue helping the Young People to achieve their goals whilst having fun.

**We meet at Milton Malsor Village Hall on a Wednesday evening during the school terms at the following times:**

**Beavers:1730-1830, Cubs 1830-1945, Scouts 1945-2100**

*For more information contact Carol Fraser GSL -  
[GSL.1CMM@gmail.com](mailto:GSL.1CMM@gmail.com)*





# Congratulations Milton FC

## NFA John Prentice Lower Junior County Cup WINNERS!

---

On Tuesday 2nd May Milton FC played Higham Town in the NFA Lower Junior County Cup . At full time the score was level at 1-1 and went straight to penalties. Milton winning 5-4.

Well done to all involved at the Club.



First trophy in 20 years!



## Milton Malsor Parish Council

As you will be aware, from previous correspondence, Milton Malsor Parish Council has been granted, from SEGRO, a sum of money in compensation for the Rail Freight Terminal which is currently being built between Milton and Collingree. The sum of money granted is £78,000, with 5% going to WNC as an admin fee, we have remaining £74,100, of which £37,050 is available to apply for now.

The Parish Council has thought long and hard about how they could use this money. There are a number of restrictions on how we can spend it and what projects qualify for section 106 monies. Below is a list of ideas we have put together:

- 1) Resurfacing of pavements for two marked areas – includes all licences. High Street West side from Green Street towards Rectory Lane, Collingtree Road near Green Street and by the Church.
- 2) Restoration of War Memorial and enhancing of lettering.
- 3) Undergrounding of power cables - From the school to the corner of Green Street / Collingtree Road.
- 4) Undergrounding of power cables 3 spans from Rectory Lane southwards along High Street.
- 5) Wooden bus shelter on Lower Road.
- 6) Infill around the Park slide with wet pour to match that at swings.
- 7) Filling in the scruffy area between the climbing frame and rotator at the Park.
- 8) Replacing the main sign at the Park.

We would welcome your thoughts and comments on these ideas and if you have any of your own, please do let us know. To make your comments please email our Parish Clerk: [parishclerk811@btinternet.com](mailto:parishclerk811@btinternet.com)

*Thatching at The Stockwell Farmhouse Spring 2023*



## News from the Friends of Milton School (FOMS)



### Bake Sales

We would like to express our appreciation to all those who supported our recent bake sales at both Holy Cross Church and Milton Parochial Primary School. Thank you to all those who baked, helped behind the scenes and on the day, and of course, to those who purchased the baked treats!

We are delighted to say that your support raised a fantastic sum for both the school and the church and we're ever so grateful.



### Planting

Another thank you to both our families and Flowercraft Nursery on Barn Lane for donating flowers and compost to help us brighten up the pots and planters. We're so pleased with the results and are so grateful to all those who helped and continue to help to water and care for them. Our pond area has been overhauled too and the children are so excited about the frogspawn!

### Outdoor Learning Area Progress

Having had a successful year of fundraising so far, we are over the moon to say that the order has been placed for the school's new £11,000 outdoor learning area, which has been a long term goal for FOMS. Lots of people have worked very hard to achieve this and we'd like to say a huge thank you to all FOMS members, both past and present, and to all families and the local community for your continued support.

### How Can You Help FOMS This Summer?

We are now busy planning our summer events which will include a raffle.

If any local people or businesses are able to help with sourcing or donating any prizes; as always this would be greatly appreciated.

If you can help, please contact:

[thefriendsofmiltonschool@gmail.com](mailto:thefriendsofmiltonschool@gmail.com)

or

Laurie on 07793 001638

All funds raised will go towards new school resources.

### Can You Help?



Wishing you all a relaxing and enjoyable summer!

Team FOMS x



# *The Church of The Holy Cross Milton Malsor*

## *Church Services*

1st and 3rd Sunday in the month are family Eucharist, and 2nd and 4th Sunday in the month are family services.

If there is a 5th Sunday, this is a benefice service which rotates around the churches within our benefice.

Children are welcome at all services, with a play area and toys available and encouraged to be used!

Finally, coffee and cake is held the first Saturday of every month, from 10.00 – 12.00. All are very welcome to come and enjoy a slice of cake, tea or coffee and to join in the raffle. Children welcome. "



---

## **Planning Application Updates**

### **Kalvec warehouse proposal ( old nursery/abattoir site)**

This is still pending consideration by the Planning Committee, originally expected to be heard in May. The Parish Council has asked to attend the relevant meeting of the Committee. Highways England have no objections to the traffic aspects of the scheme, but WNC Highways prefer the abattoir entrance to be the sole site entry.

### **Six dwellings on paddock off Towcester Road**

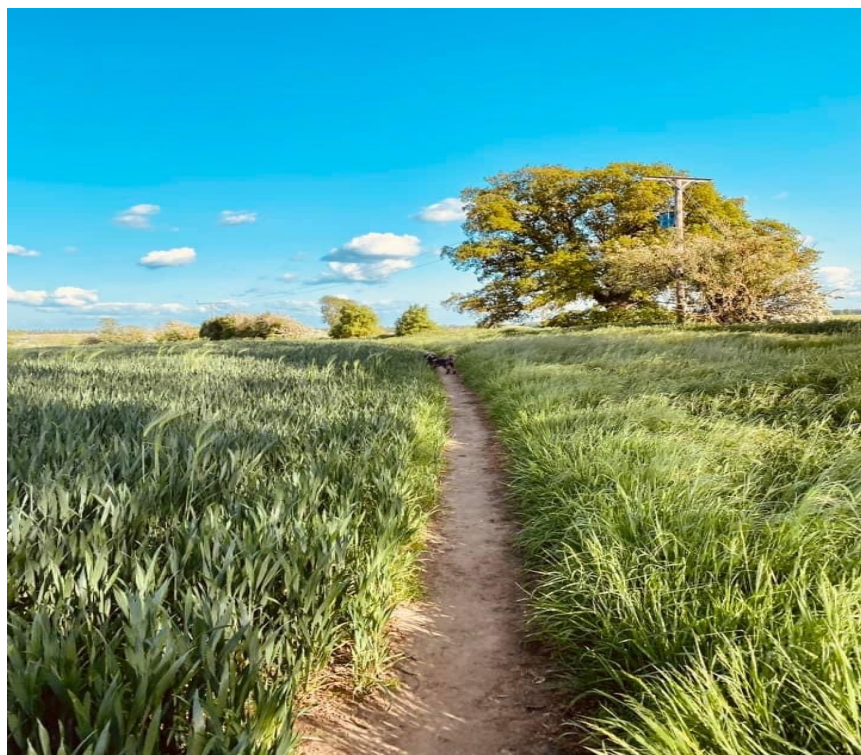
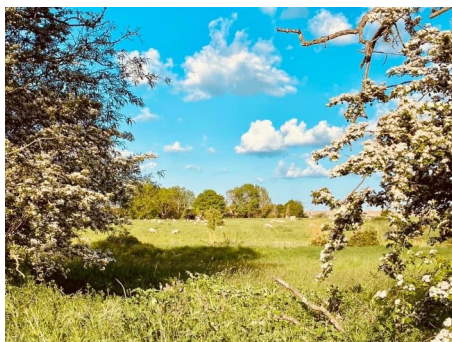
Also still pending a decision. The Local Highway Authority has raised several issues which the developer should address, concerning the number of properties using the site driveway, refuse vehicle access, exit visibility and speed data from the main road. The Conservation Officer lists several concerns about the heritage impact of the proposal, and concludes there are “ varying degrees of less than substantial harm to the Conservation Area” and that this “ overall harm should be weighed against the public benefits of the scheme.”

### **1 Rectory Lane self-build.**

An Application has been made to vary the Local Connection Criteria for self-build projects, asking to widen the qualifying area to West Northants rather than South Northants, thereby increasing fivefold the number of those potentially eligible. Also pending a decision



## *Around Milton: Summer 2023*



Photos : Jaquelyn Jones

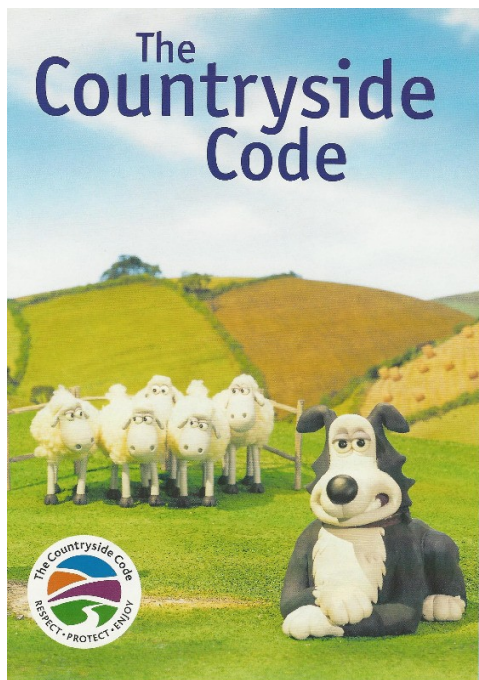
I was watching Country File on BBC Television recently and watching it has prompted me to write this article. In the programme it showed rows of dead sheep, some of the sheep had been in lamb when killed and there were some cattle, all had been killed by dog attacks. The amount of dog attacks on livestock has substantially increased since lockdown and the increase in dog ownership and many more households now own a pet dog.

**Listed below are some reminders for dog owners when walking in the countryside.**

- Always make sure you close all gates
- If walking near sheep or cattle please make sure you keep your dog on a lead.
- If walking across a planted field always keep to the footpath and don't let your dog trample the crop
- Pick up after your dog and do not throw your bag in the hedgerow
- If you see a broken stile or an obstruction on the public footpath, report to the Parish Council

Enjoy your countryside walks whether locally around our lovely village or further afield and take all litter home. It is said that the only thing you should leave behind in the countryside is your footprint. Let us help our farmers to earn a living and protect our countryside.

Janet Winchester  
Dog Warden.



## **VILLAGE GROUPS**

### **Art Group:**

Wednesday, Village Hall, 1.30-3.30pm in term time. The group is self help, with regular visiting artist demos and workshops. Contact Marion 859109 or Anne Manson 858326 (eMail: [stuart.manson@btopenworld.com](mailto:stuart.manson@btopenworld.com))

### **Beavers:**

Wednesday, Village Hall, 5.30- 6.30pm in term time (age 6-8). Contact Group Scout Leader Carol Fraser 01604 862717 (email: [GSL.1CMM@gmail.com](mailto:GSL.1CMM@gmail.com))

### **Brownies:**

Monday, Village Hall 6.00-7.15 pm in term time (age 7-10) Contact Christine Ladd (Brown Owl) 705910 (eMail: [christine.ladd@btinternet.com](mailto:christine.ladd@btinternet.com))

### **Crafty Yarns:**

We meet on the first and third Wednesday of each month from 2.00 at Raynsford House. Contact Tom McManus on 07845 962708

### **Cubs:**

Wednesday, Village Hall, 6.30-7.45pm in term time (age 8-10½) Contact Group Scout Leader Carol Fraser 01604 862717 (email: [GSL.1CMM@gmail.com](mailto:GSL.1CMM@gmail.com))

### **Milton FC:**

Has two adult teams. For membership and club hire details contact Len Mackintosh 01604 858145

### **Milton Parochial Primary School:**

Mrs Rebecca Osborne - Executive Head Teacher 858816  
eMail: [office@milton.pdet.org.uk](mailto:office@milton.pdet.org.uk)

### **Scouts:**

Wednesday, Village Hall, 7.45-9.15pm in term time. Contact Carol Fraser Group Scout Leader 01604 862717 (email: [GSL.1CMM@gmail.com](mailto:GSL.1CMM@gmail.com))

### **Short Mat Bowls:**

Village Hall. Bowls Organiser 01604 858418

### **WI:**

Contact Brenda Jenks 01604 858866

## MILTON MALSOR PARISH COUNCIL

### Parish Clerk (and lead West Northamptonshire Councillor for Milton Malsor)

Ann Addison

The Paddocks, Baker Street Gayton Northampton NN7 3EZ 01604 858226

[ann.addison97@gmail.com](mailto:ann.addison97@gmail.com)

### Chairman

Simon Jones	Highways and Lighting	07817 852857
-------------	-----------------------	--------------

### Vice Chairman

Edmund James	Finance	07899 996279
--------------	---------	--------------

### Council Members

Neil Jagger	Village Park and Trees	01604 859135
Paul Heath	Planning	01604 859453
Katie Marshall	Flower Planters	07992 842358
Katie Spruels	Facebook, Website, Newsletter & Neighbourhood Watch	01604 858047

Janet Winchester	Maintenance & Environment lead (all Councillors), Dog Warden, Newsletter, Footpath Warden	01604 858999
------------------	---	--------------

Brenda Jenks	Newsletter & Finance	01604 858866
--------------	----------------------	--------------

Ian Appleton	Planning	07881 022132
--------------	----------	--------------

### Other Parish Contacts

Colin Neal	Website Manager	
Julie Tite	Milton Malsor Village Hall	07854 366803
Karen Cooper	West Northamptonshire Councillor	07753 638180
Adam Brown	West Northamptonshire Councillor	07714 255077
Chris Heaton-Harris	MP (Daventry)	0207219 7048
Nicola James	Medicine Collection	07989 307670
Chris Eads	Newsletter Editor	
Parish Council Website	<a href="http://www.miltonmalsorparishcouncil.org.uk">www.miltonmalsorparishcouncil.org.uk</a>	
Facebook Group	<a href="https://www.facebook.com/groups/MiltonMalsorVillage">www.facebook.com/groups/MiltonMalsorVillage</a>	

(if you're not already a member, ask to join)