



Issue 35
Christmas 2011

• ***The Localism Act - what
it will mean for
the village***



Milton Malsor

*Parish
Council
Newsletter*

www.miltonmalsorparishcouncil.org.uk

Whilst we take care to ensure statements made in the Parish Council Newsletter are accurate, we can take no responsibility for errors that may occur. Opinions expressed may not necessarily reflect the views of the Parish Council. Note that some items such as photographs, logos and maps are copyright. Printed by Campion Reprographics, Campion School, Bugbrooke, NN7 3QG Published and promoted by Milton Malsor Parish Council c/o The Parish Clerk, The Paddocks, Baker Street, Gayton, NN7 3EZ

Milton Malsor Parish Newsletter

Number Thirty-five- Christmas 2011

CORRESPONDENCE and items for publication should be addressed to the editor, Cllr Shaun Hope, 27 Rectory Lane or email:

spes@btinternet.com

Items should show if they are for publication. Letters, including emails and faxes, will be published only if name, address and telephone number are included. Please keep to a maximum of 100 words. The parish council reserves the right to edit and publish material. **Anonymous or contentious items will not be published in any circumstances.**

THE FRONT PAGE image shows the Village Memorial Green on Saturday 18 December last year after an overnight temperature of -12°C.

DISCLAIMER Please note the disclaimer on the cover page and warning regarding some copyright items - if in doubt please check with the editor.

ADVERTISEMENTS We do not accept paid advertising at present.

EXTRA COPIES Please order in advance - a charge may be made.

COPY DEADLINES Deadline dates for items for inclusion are in the Village Diary on p26 and on the bottom of the back page. Please send items for inclusion as early as you can. Photos are especially welcome in any standard format (see also box below). Publication is usually two weeks later.

YOU CAN PUBLICISE YOUR EVENTS FREE IN THE LOCAL PAPER

The *Down Your Way* column is a local community column in every Monday edition of Northampton's *Chronicle and Echo*. If you have any village news items, notice of events or photographs, etc you would like included just email, phone or drop details in my letterbox. The deadline for the column is 4pm on the preceding Wednesday. Photos are welcome- any format (JPG, TIFF or BMP etc) or copy for scanning. Please include details of the pictures including names of individuals. *The DYW column is not the official voice of the parish council.* EDITOR

FROM THE PARISH COUNCIL CHAIRMAN

Mrs Brenda Jenks

WELCOME to the Christmas edition of the newsletter. There are a number of on-going council matters.

HOUSING NEEDS SURVEY

FOLLOWING the survey conducted during the summer, it was established there is a need for a mix of 14 affordable homes for rent and also shared ownership in our Parish.

The council supports this initiative and is now awaiting the outcome of negotiations between South Northants Council (SNC) and a local landowner.

Because of these negotiations, we are unable to identify the parcel of land at this time.

The full results of the survey can be found further on in the newsletter.

BEQUEST

IN OUR autumn newsletter we reported that we have received a bequest of £29,000 from a late resident of the village.

I can now reveal that our benefactor is the late Mrs Jean Wormald who lived at 'The Hollies' in Green Street. She lived in Milton with her husband Bill, who pre-deceased her, for many years. Those who knew her will testify to her spirit and character.

She was an archivist and well revered in her field. Now is the time to ask you for your ideas on how the money should be spent.

This should remember that her wish was for the bequest to benefit the whole community. Of course, it should also be a lasting memorial to Jean. Further on in this newsletter you will find more information and contact details for your suggestions.

HGV TRAILER RENTAL BUSINESS – GAYTON ROAD INDUSTRIAL ESTATE

WE WERE disappointed to hear that the survey on traffic flows, to and from this site, due to be

carried out by South Northants Council in September, had not taken place.

This was due to a difficulty with the independent company contracted to carry out the survey. The latest position is that SNC are currently commissioning another company to 'do the job' and we hope the survey will soon be undertaken.

We continue to be frustrated by the lack of progress in this matter and the trailer rental business having been identified as 'in breach of planning permission' still continues to trade.

TRAFFIC CALMING OUTSIDE THE VILLAGE PARK

NORTHANTS County Council have now installed traffic calming road markings (known as dragon's teeth) at our request, at the Collingtree Road start of the 30mph speed limit.

Thanks to our county councillor, Bernard Ingram, after our many letters fell on deaf ears!

VILLAGE PARK

THE PARK has been very well used over the summer months and during this time a team of volunteers have valiantly carried out watering duties to keep alive the newly planted trees and shrubs.

The long dry spell has made this imperative and I would like to express my gratitude to those volunteers for the time they have given to this as it takes an hour and a half to water everything. We now have water 'on tap' as well as long hoses, so buckets are thankfully no longer needed!

I would also like to remind parents that the equipment sited at the railway end of the park, in particular the zip wire. Rotating

Clerk to the Parish Council

Mrs Ann Addison

The Paddocks, Baker Street, Gayton,
Northampton NN7 3EZ

T: 858226 F: 879360

E: a_addison@btinternet.com

swing and so on are aimed at the over eight age group. Young children using this equipment need to be supervised.

The park has had a detailed inspection by RoSPA and monthly safety inspections are carried out by the parish council. The latest safety report can be found on the parish council's website.

Parking on the verge outside the entrance is a hazard - please do not park there. The view from the road of small children wanting to cross is obscured by parked vehicles. We will be placing a 'no parking' sign on the fence adjacent to the gateway. Please park considerately.

THE LOCALISM ACT AND NEIGHBOURHOOD PLANS

THE GOVERNMENT has now finished debating the Localism Act (formerly the Localism Bill) and it has now been passed by Parliament.

It should give new freedoms to local communities.

...continued on next page



PARISH COUNCIL MEETINGS are on the second Tuesday each month (August and December are optional and subject to the parish work load). Details are on the back cover. All meetings are open to the public, so all residents are welcome to attend. If you wish to speak on any parish matters, an opportunity is given in the public session. Meanwhile, please send all letters and other communications about parish council matters to our Clerk (*see contact details p3*).

...continued from previous page

What does this mean for our local community?

The parish council will need to draw up a new 'Neighbourhood Plan'. This will include a housing plan identifying local need over the next 10 – 15 years. Details are still sketchy at this time, we will provide further updates when we have more information.

The 'Neighbourhood Plan' will build on the existing 'Milton Malsor Parish Plan' which was published in 2005.

A key difference is that the new plan will be subject to a Public Examination.

However, it should become a key document in securing the future development of the village and take full account of local views.

The input of all residents will be needed for this plan as it will be very important for the village's future.

There are more details about the Localism Bill in this magazine and you will be hearing a lot more soon.

BUDGET

OUR budget for the 2012-13 financial year has been set.

I am pleased to report that there will be no increase in the Precept in line with South Northants Council, Northants County Council and the Police Authority. More details can be found in later in this newsletter.

PARISH COUNCIL VACANCY

WE have a vacancy on the parish council. Are you willing to serve the community and can you commit one evening a month on a Tuesday to attend a meeting of the council?

Some councillors also carry extra responsibilities and these are shared equitably. Please contact our Clerk, Mrs Ann Addison or any councillor for further information if you would like to discuss in more detail how the Council operates.

On behalf of my fellow councillors I would like to wish you a happy Christmas.

Brenda Jenks - Chairman

**Saturday 4 February 2012 7.30pm
Milton Malsor Village Hall**

The Chairman of South Northamptonshire Council, Councillor Sally Townsend, is holding a Race Night in aid of Marie Curie Cancer Care and Diabetes UK.



Tickets are £12 including

Race Night

a fish and chip supper (alternative available) and there will be a bar serving wine and soft drinks.

To book please contact Sally on 07976 779038 or tumbledown@btinternet.com

PLANNING ISSUES

HGV TRAILER OPERATIONS - GAYTON ROAD TRADING ESTATE

THE UNLAWFUL use of the site on the Milton Trading Estate has now been going on since since April/May 2009 - over 30 months.

During this time the village has been disturbed by the resulting increase in HGV traffic using Towcester Road and the village itself through Rectory Lane and the dangerous junction with Towcester Road - a continuing scene of minor accident.

Barn Lane and Collingtree Road has also been affected as well as Collingtree Village and East and West Hunsbury

BREACH OF PLANNING CONTROL

In spite of a categorical statement by South Northants Council (SNC) that it is a breach of planning control, the council has still failed to take any enforcement action on an issue which has now been festering in the village and beyond for two years.

A full explanation of the issues of concern appeared in the previous (autumn 2011) issue of this magazine.

THE CURRENT SITUATION

The original permission which was given in August 1970 was for "open air storage" on the site.

The current use is as an HGV trailer rental business. However, SNC seems to want a "negotiated settlement" and has stated in the minutes of a February 2011 meeting that:

"A successfully negotiated planning permission would give the opportunity to control any perceived nuisance by way of conditions - officers had come to the view a considerable time ago that a planning solution agreed with the landowners was a more effective and certain way of securing a real improvement for the local community".

UNACCEPTABLE RESPONSE BY SOUTH NORTHANTS COUNCIL

A lorry routing agreement will not prevent HGV traffic through Milton Malsor. Nor Collingtree, nor Blisworth, nor East Hunsbury, nor West Hunsbury. SNC 'solution' is unacceptable.

The statement that it is a "way of securing a real improvement for the local community" is totally absurd.

WHY NO ENFORCEMENT ACTION? STILL NO ANSWER FROM SNC! This is in spite of repeated questions.

INDEPENDENT TRAFFIC SURVEY

We have now learnt that SNC has commissioned an independent traffic survey. It is understood this will be to assess the number and type of vehicles using Gayton Road, Towcester Road and through the village.

This is a costly exercise and normally only done when there is a planning application, generating unsuitable vehicle movements. But there is no planning application in this case.

Moreover, it will tell us nothing that we don't know already. However there is no

No enforcement action after over 30 months is unacceptable.

...continued from previous page

sign of a traffic survey being done as this is going to press.

We don't need a traffic survey. We need a proper and well overdue enforcement notice to stop this illegal activity. SNC should wake up, listen to their electors, stop procrastinating and take proper enforcement action. Meanwhile the residents of Milton and the surrounding areas continue to suffer from HGVs.

It's over 20 years since the A43 by-pass was opened: the villages of Blisworth and Milton expected that this would mean the end of HGV traffic through their residential areas. SNC have failed their electors and are treating their residents as mugs.

THE OLD SEWAGE WORKS DEVELOPMENT - TOWCESTER ROAD. PERMISSION was given some time ago for the storage and transfer of hardcore waste at the old sewage works on Northampton Road, Blisworth adjacent to Young's Nurseries.

The issue was covered last in issue 27, the Christmas edition in 2009 (still available on the parish council's website). This is in Blisworth Parish which shared the concerns of our own parish council.

BACKGROUND

These were vehicle access and exit which would be on a sharp bend close to the railway bridge; increased HGV traffic on Towcester Road; dirt and dust from the site. The site planning application stated that the site would handle 25,000 tonnes of recycled aggregates a year.



Over 20 years since the A43 by-pass was opened and we thought that would be the end of HGVs through the village.

Both Blisworth and Milton Parish Councils strongly objected to the application as did South Northants Council (SNC). Permission for this development was the responsibility of Northants County Council (NCC).

A particular concern was the difficult access to and from the site and more HGV traffic on the Towcester Road affecting Milton and Blisworth - a road with a major accident history even since the A43 by-pass opened in 1991.

In spite of all this NCC gave permission but stipulated that a 40 mph limit would be required between Blisworth (where the existing 30mph limit ends) and Milton (at the start of the existing 40 mph limit). This 40mph limit would need to be installed before the site could be used. In our view this still compromised road safety. This was, firstly, because of the difficult access point to and from the site. Secondly, because of the hazard created by the obstructed view of the road to other traffic when an HGV was leaving the site (a simulated view of this is in issue 27)

LATEST NEWS

It's now two years since this matter arose and not a lot has happened. There have been periodic reports of clearance work taking place including tree removal and occasional vehicles parked on the site. It will be fairly obvious that the 40mph limit has not been installed. We can only assume that the money for this has not been forthcoming from the developer.

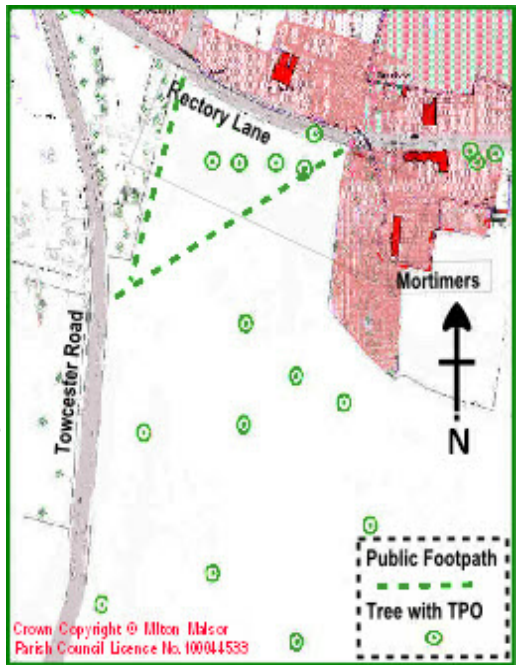
All that has happened is that a lot of lights have been turned off on this dangerous stretch of road. If you should

see any activity on this site, however, we would like to hear about it.

14 NEW TREE PRESERVATION ORDERS FOLLOWING the sale of Mortimers the land was split into three separate parts.

The field known as the 'Leys' opposite Milton House in Rectory Lane has been linked in a 'U' shape with the land at the back of the houses in the lower part of Rectory Lane. The land was used for grazing for many years but has now been ploughed and will be used for cropping, initially barley. In order to prevent damage to trees on the site, South Northants Council has issued Tree Preservation Orders (TPOs) on 14 trees on the site, mostly on the south side of Rectory Lane opposite Milton House. Their approximate locations are shown on the plan right.

oEndso



A CHANGE OF NAME

At the Annual Meeting held in October members voted to change the name of the Institute to Milton Malsor & Collingtree Women's Institute with effect

from 1 January 2012.

The proposal for a change of name was put forward as our membership from Collingtree has steadily increased over a number of years and it was felt that the current name did not truly reflect the membership. Our continuity will not be affected and this was an important factor in the decision to ballot the members. The Institute enters its 86th year in 2012 and all the members are proud of its unbroken history. At the Annual meeting Brenda Jenks was re-elected as President supported by a committee of eight members.

A number of members recently went for lunch at the Swan Rural Enterprise Centre, based at the Pury Hill Business Park near Towcester. The Enterprise Centre trains youngsters in pre-apprenticeship

programmes in catering and hospitality and the centre also offers conference facilities.

An excellent lunch was cooked and served by young students, overseen by their trainers, and we were pleased to support this venture.

Our recent speakers have covered wide ranging topics: "*The need for long-term Foster Carers*", "*Murder most Royal*", the story of King Edward II, and on a less serious note "*It could only happen at a wedding*".

In December we plan a relaxed social evening with refreshments and an invitation to make a table decoration under the guidance of Ann Marsh.

We look forward to the future as Milton Malsor & Collingtree Women's Institute and offer an invitation to drop in on a meeting.

Our meetings are held at 7.30 pm on the 2nd Thursday of every month with the exception of August. In May and October 2012 the meetings will be held in Collingtree Village room and the remaining months in Milton Malsor Village Hall.

Brenda Jenks

Neighbourhood Watch and Police notes



The following message was originally from Jim Maddan, Chair of Neighbourhood and Home Watch Network (England & Wales) and has been slightly amended for this newsletter. We are all aware of attempts to steal material from the church and the actual thefts which took place on part of the railway which runs through the village.

Editor

METAL THEFT

YOU CANNOT have failed to read in the papers or seen reports on the television that there has been a staggering increase in the number of metal thefts in the last year.

It would be helpful if as many members of the public as possible especially all Neighbourhood Watch and Home Watch members sign an online e-petition.

If enough people do so, it would cause a parliamentary debate on the subject of moving towards a cashless business model for scrap metal dealers. You can sign the petition here at this website:

epetitions.direct.gov.uk/petitions/406

Many of these crimes would stop overnight if there was no ready market for their ill-gotten gains.

Ninety per cent of transactions in scrap metal yards are by cash.

Record-keeping is non-existent and no questions are asked. Existing legislation is very weak and goes back to the Scrap Metal Dealers Act of 1964.

Maximum fines are very low. A cashless model would be another step on the route to effective legislation.

There will be exceptions to every model, but legislation which gives robust powers to police and local authorities accompanied by powers of temporary closure given to Police Superintendents and powers of closure and confiscation of assets given to magistrates, will give legitimacy to genuine businesses and put the cowboys out of business.

These heartless crimes have involved plaques from war memorials and gravestones and the roofs from churches.

There have also been crimes which have a huge impact on our everyday life,

NOISE NUISANCE AND DISTURBANCE

Late at night or in the early hours, call South Northants Council's **Environmental Protection Team** on their **0800 160 1022** 'out of hours number' or weekdays (8.45am-5.15pm) **01327 322223**. *If you contact the Police about noise disturbance, they will refer you to these numbers.*

MILTON RESIDENTS ONLY: ANYTHING SUSPICIOUS?

If so call the Police Contact Centre 03000 111 222 This is the only number other than emergencies (999) to pass on information or report non-urgent incidents.

IN EMERGENCY do not hesitate to dial 999 as usual.

Website: see bottom of page

Northamptonshire Police website: www.northants.police.uk

ranging from theft of Network Rail cables. This causes massive disruption to the travelling public as well as dangers to those operating the railways.

Thefts of British Telecom cables have caused the loss of emergency care lines to sheltered housing schemes and the interruption of communications systems to the fire, police and ambulance services as well as the coastguards and RNLI.

Members of the public have a very important role to play in tackling this abhorrent crime. Please be alert to suspicious incidents in the village and report such incidents to the police.

Please sign the petition today and pass to your friends and neighbours, and let's try to put a stop to this abhorrent crime once and for all.

Milton's local Neighbourhood Watch

Housing Needs Survey - Update

AS YOU will be aware South Northamptonshire Council has been working with Milton Malsor Parish Council to find out if there is a need for affordable housing in the parish.

A survey was carried out during July this year and from the 321 survey forms sent out, 102 (32%) were returned. The results have now been collated and a report produced.

The main findings of the report are:

- ◆ 58% of respondents said that they would be in favour of a small scale affordable housing development and a further 26% might support a development
- ◆ 5 households would like to move in the next five years
- ◆ The main reason for people looking to move is to set up home for the first time
- ◆ 18 households would like to move within the parish of Milton Malsor
- ◆ 15 households have been identified as being in need of affordable (social) housing

Consequently, the report recommends that a mix of 14 additional affordable homes for rent and on for shared ownership are required for Milton Malsor Parish.

The next step is to continue to progress the work in Milton Malsor to develop a small affordable housing scheme.

If a development of affordable housing does get built in the parish it would be subject to a set of local connection criteria so that the homes meet the needs of local people.

A local connection is usually defined as someone who currently lives in the parish, has previously lived in the parish, has close relatives in the parish or is permanently employed in the parish.

The period of time generally considered for having a local connection under these criteria is three years.

If you would like a copy of the housing needs report or have any questions

...continued on next page

...continued from previous page

about housing need in Milton Malsor Parish, please contact Gillian Spencer, Strategic Housing Officer at South Northamptonshire Council on 01327 322372 or email gillian.spencer@southnorthants.gov.uk

A full copy of the report is available on the parish council website in the

documents section. In addition the housing section of the SNC website has details of completed surveys for many other villages in the South Northants area and sections on completed schemes. These show how completed schemes are finished to quite high standards to blend in with the rest of the community.

VILLAGE BEQUEST

Your views are sought

AS WE ANNOUNCED in our Parish Council Newsletter in September, the parish council has received a bequest from the estate of a late resident of our village. The bequest is £29,000.

The parish council is considering how best this money can be used for the benefit of the whole village community and as a lasting memorial to our benefactor.

We would be interested in hearing residents' views before making a final decision. These should be addressed to our Clerk, Mrs Ann Addison at the postal or email address on page three and should be received no later than 31 January 2012.

Please make sure your suggestions include information about likely cost, the site proposed, and the benefit to the wider community. Please also point out any negative aspects in your proposals and the the overall purpose stated in paragraph two.

It is not intended that the bequest is used for items which would be normal parish, district or county council's

responsibility, for example lighting, road maintenance and so on.

Some of the suggestions so far are:

- ❖ *A village sign (as at Rothersthorpe and Gayton centres for example);*
- ❖ *An additional basketball hoop and goal post on the village park;*
- ❖ *More bench seating around the village;*
- ❖ *Tourist information signs (as in Blisworth for example);*
- ❖ *A red telephone box;*
- ❖ *A larger post box to take A4 letters;*
- ❖ *A visitor's map with features of interest located somewhere centrally.*

What would you like to see?

Please outline your suggestion under the following headings:

PROPOSAL:

SITE or SITES (Please specify precisely):

ESTIMATED COST:

COMMUNITY BENEFITS:

ANY DISADVANTAGES:

ANY ADDITIONAL COMMENTS

NAME, ADDRESS ETC (Don't forget to include your name, address, telephone and email - *please note that anonymous suggestions will not be considered under any circumstances*). We need to know you are a local resident - this will carry more weight in assessing your suggestion).

DOG WASTE AND LITTER

THERE HAS RECENTLY been an increase in dog waste left in the village. There are particular problems in Rectory Lane and the footpath between Rectory Lane and the Compass.

There are also litter problems in the same areas, some of which may be due to the volume of cars using this route.

Please note that we are on the look-out for offenders and that **£75 fines** can be issued for dog fouling, graffiti, fly posting and littering.

This also applies to other anti-social behaviour (see also page 19 - **FIXED PENALTIES**). Please dispose of dog waste in the bins provided and take your litter home. If you see anyone dropping litter from a vehicle please make a note of the number and report it to our Clerk (see box on p3).

The parish council spend some £1,000 a year on providing dog bins and litter bins - please use them. Please also note that **the area covered by fines covers the entire village area, not just the built-up part.** (See the map on the website)

WANTED Another Parish Councillor

MILTON MALSOR PARISH COUNCIL has representatives from most parts of the village but not all areas

Whether you've only been living in the village for a short time, have lived in the village for many years or have recently moved here, we'd love to welcome you onto the parish council as we currently have a vacancy.

It's not hard work.

Being a Parish Councillor involves one evening meeting a month, some reading in-between.

Some councillors carry extra responsibilities such as keeping an eye on the park, planning applications, local roads and so on.

The parish council is non-political. However, if you have political ambitions it can be a good first step towards District and County Council and maybe even further.

Above all the Parish Council needs to have representation from a range of opinions and from people with different skills across the whole village.

If you're over 18, interested in what's happening in the village and are able to volunteer, then please phone the chairman, Brenda Jenks, on 858866 for an informal chat.

Parish councils are elected once every four years with the next one in 2015. However, in between elections the parish council can co-opt individual councillors without an election.

There are certainly challenges ahead with the Big Society and the Localism Bills which will present challenges to parish councils as you can read elsewhere in this newsletter

THE REMEMBRANCE DAY service at the war memorial was well attended, with an even larger number of people than last year. Rebecca Ludlow, who plays cornet for both the County Youth Brass and Moulton 77 Bands, performed the Last Post and Reveille. We are very grateful for all who contributed including the Beavers, Cubs, Scouts and Brownies who also participated in the service. Matthew Perry and children from Milton school laid the wreath and poppies. Nichola Perry read the names of the fallen.

Remembrance Sunday



Village Park

OBVIOUSLY the parish council were delighted with these comments made in the Royal Society for the Prevention of Accident's (RoSPA) report after a detailed inspection by them of the park earlier this year.

We pointed out in our newsletter last Christmas that risk is a vital ingredient and a part of growing up. Children learn to assess, appreciate and manage risk through play. If they don't get the thrills they need in the playground, they will look elsewhere.

That said, it is important that young children should be supervised at all times in the park area.

"What a transformation and a wonderful play space. Congratulations to all concerned for creating and excellent play facility with something for all ages and abilities. Possibly the best play area in Northants!" RoSPA Inspection Report 30 June 2011

someone gets injured does not mean they can successfully sue. They must prove negligence.

This is one reason the parish council does a routine check at least once a month to look for obvious faults. An annual inspection is done in addition by an outside professional inspector to look for less obvious problems.

All play equipment carries some risk including the old swings and slide which have been retained.

As RoSPA point out in their Insurance notes, some items of equipment, by the very nature of the activity that takes place on them, are rated as being medium or high.

This may well be deemed an acceptable level. Even playing sport carries a risk of injury. Just because

RoSPA states that it should however be appreciated that there is no such thing as a 'no risk'. There is risk associated with everything we do and you cannot get lower than 'low risk'.

The Health and Safety Executive (HSE) estimate that the risk of a life threatening injury on any form of play area is 1 in 30 million. The HSE consider that 1 in 10 million is negligible. So the risk of any life threatening injury on an area where children and young people play is insignificant.

As the chairman has pointed out in her opening remarks what is more of immediate concern to us - namely speeding traffic and badly parked traffic in Collingtree Road near the park. New 'dragon's teeth' marking have recently been installed by the county council and 'no parking' signs will shortly be installed.

The parish council's inspection reports which contain RoSPA's risk comments in more detail are in the documents section of the parish council's website.

MILTON MALSOR PARISH COUNCIL**BUDGET & PRECEPT****FINANCIAL YEAR: 2012 / 2013**

<u>ITEM</u>	<u>BUDGET 2011-12</u>	<u>PROPOSED BUDGET 2012-13</u>	
Audit	450.00	750.00	
Clerk's Salary	3,192.00	3,300.00	
Clerk's Expenses	400.00	400.00	
Chairman & Councillors Expenses	300.00	300.00	
Donations	300.00	200.00	
Electricity - Lighting	1,200.00	1,200.00	
Electricity - Maintenance / repairs / new	1,000.00	1,300.00	
Lighting Repairs & New	500.00	0.00	Note 1
Capital expenditure / Village Park equipment	5,000.00	5,000.00	
Capital Expenditure / General	500.00	500.00	
Grass Mowing	3,000.00	2,800.00	
Park Maintenance & RoSPA Inspection	800.00	1,000.00	
Insurance	1,000.00	1,200.00	
NALC - subs & training	200.00	300.00	
Raynsford House Hire	200.00	200.00	
Village Maintenance	2,000.00	1,800.00	
Miscellaneous / Contingency / Admin	500.00	500.00	
News Letter & Communications	600.00	600.00	
NALC Training	100.00	0.00	
Neighbourhood Watch	100.00	50.00	
Village Environment / Dog bins	2,000.00	1,000.00	
TOTAL	23,342.00	22,400.00	
<u>RECEIPTS (to 31/10/11)</u>	<u>To 31/10/11</u>		
Precept	20,500.00		
Burials	20.00		
Open Spaces	579.77		Note 2
Bank Interest	12.97		
VAT Refund	7,210.39		
Section 137	0.00		
Other	143.00		
TOTAL Precept + receipts	<u>28,466.13</u>		
<u>PRECEPT</u>	20,500.00	20,500.00	

Notes: (1) see maintenance (2) NCC mowing contribution to add

As explained in the chairman's notes, there is no change in the precept - that part of the council tax set by the parish council - for the financial year 2012-2013.

NEWS BRIEF



ANGLIAN WATER APPLIES FOR DROUGHT PERMIT **THE ENVIRONMENT Agency will decide if water from the River Nene can replenish Pitsford Reservoir.**

Anglian Water has applied for a drought permit after the driest spring in Northamptonshire for 80 years.

The Environment Agency will decide if the firm can extract extra water from the River Nene to replenish Pitsford Reservoir, now at 56% capacity.

There has been an average 20% less winter rainfall in the reservoir's supply area. This was then followed by the driest spring in over 80 years and rainfall remained exceptionally low.

At this time of year reservoirs are usually topped up in preparation for summer. However due to low river flow in the Nene, the storage levels at Pitsford dropped below the Anglian Water target.

Levels of water in the Nene improved slightly in the summer, but not enough to refill the reservoirs to an acceptable level. During the autumn, river flows in the Nene deteriorated further. In September rainfall was on average 49% lower than in previous years.

If the dry conditions were to continue throughout this winter, storage levels at Pitsford would not recover and would remain very low.

They are taking action now by applying for a 'Drought Permit', to try to keep water supplies secure and meet customers needs. There will be a campaign to encourage people to cut waste and to ask customers to be careful with what they use. Anglian are continuing to target leaks so that water isn't wasted.

However, our experience in the last year with leaks in Rectory Lane and Green street have not been good. It has taken more than one attempt to fix leaks. Anglian say they are investing more money and recruiting more staff specifically to tackle leaks and bursts.

NEIGHBOURHOOD PLANS AND THE LOCALISM ACT **THE 'LOCALISM BILL', was enacted by Parliament in November.**

The government is inviting 'neighbourhoods' – for us the parish and village of Milton Malsor – to produce 'Neighbourhood Plans'. These will show residents' views on how their neighbourhood should be developed.

The plan will undergo a formal 'examination' and become an official planning document. Where there is a parish council, that council is expected to draft a plan in consultation with residents. The draft plan will then have to have approval of a majority of all residents in a referendum. The parish

...continued on next page

...continued from previous page

council has decided to provide a plan in order to secure the future of our village.

The procedure is as follows-

- a) The parish council (PC) notifies South Northants Council (SNC) of its intention;**
- b) The PC prepares a draft Neighbourhood Plan (NP) for residents to comment on;**
- c) The PC takes account of views expressed and finalises the plan in consultation with SNC;**
- d) SNC send the NP for an independent examination; and**
- e) If accepted, SNC organises a referendum of our residents;**
- f) If 50% or more of voters are in favour then the NP must be adopted by SNC as a formal Planning Document.**

The PC intend to draft our NP themselves and, as SNC bear their own costs, the cost to residents – from the precept should be reasonable for a very worthwhile investment. The timetable is not clear at present but we will keep you informed. As for the Parish Plan of a few years ago, we may need additional help from a team of residents.

CONSTITUENCY CHANGES

THE Coalition Government has decided to reduce the number of Constituencies in England from 533 to 502. This will apply from the General Election due in 2015.

Overall in the UK the number will drop from 650 to 600 Constituencies. The East Midlands region has been allocated 44 Constituencies - a reduction of 2.

A significant change is that, with the exception of the Isle of Wight, the number of electors in each Constituency must be between 72,810 and 80,473.

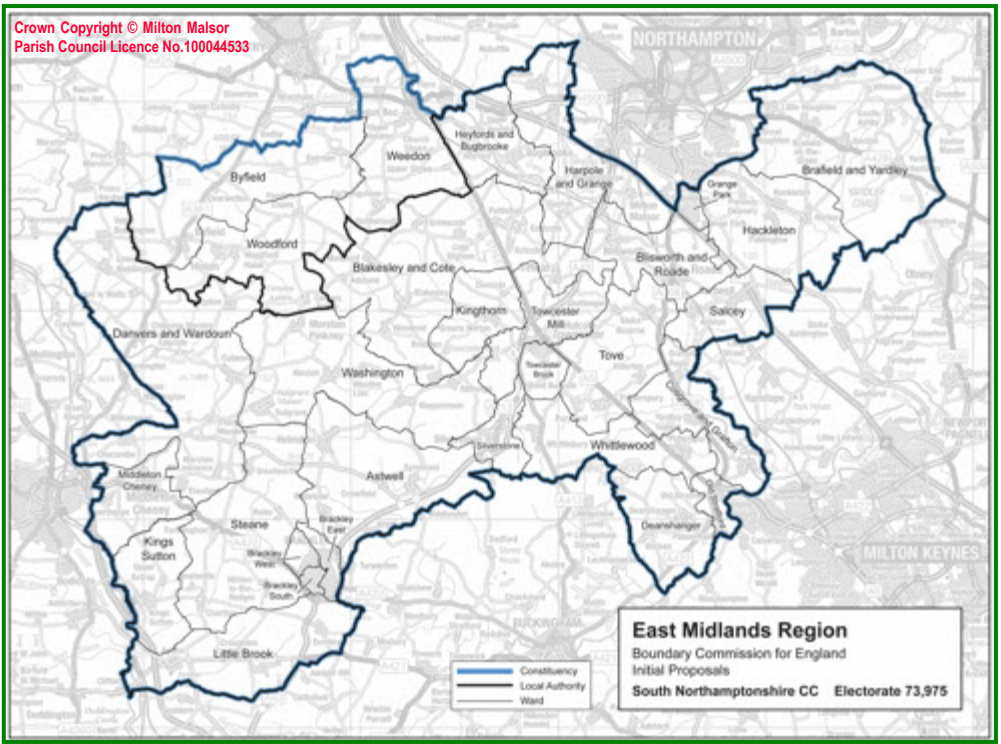
It is proposed that the Constituency of South Northamptonshire will include all wards from South Northamptonshire district (including our parish) and three Daventry Wards (see map right - this will be better viewed magnified on the parish council website).

THE NATIONAL PLANNING POLICY FRAMEWORK (NPPF)

The Localism Act has proved controversial in its passage through the House of Commons, and with groups such as The National Trust and CPRE. We shall have to see how it works out in practice and the village will find out as the parish council develops its own neighbourhood plan - essential in my view. Next on the list is the NPPF on which the Government's consultation has just ended. There are implications for the village. Here is the Campaign to Protect Rural England (CPRE)'s view, reproduced with permission. EDITOR

The Government's consultation on the NPPF has just drawn to a close.

After months of campaigning against key elements of the proposed new policies by concerned groups – with the Campaign to Protect Rural England (CPRE) playing a leading role – as well as criticism in the press, it remains to be



seen whether the Government will heed its critics and think again.

As the Government's 'development at almost any cost' stance has unfolded in this year's Localism Act and now the NPPF, CPRE has become concerned that it could damage the countryside and hamper the ability of communities to protect the places they love.

At times, the planning debate has turned bitter, with Ministers accusing anyone who expressed any criticism of their consultation document of having 'vested interests', demonstrating 'nihilistic selfishness' or being 'semi-hysterical'.

So it was something of a relief when David Cameron recently wrote to CPRE and other groups to reassure them that he was committed to protecting the

countryside and willing to meet his critics to discuss the plans further.

'It is good to hear the Prime Minister make clear that he regards the British landscape as a national treasure, which needs to be cherished and protected for everyone's benefit' said Shaun Spiers, Chief Executive of CPRE.

'CPRE is clear that this applies to the whole of the countryside, not just designated areas, and this should be made clear in the final NPPF'.

He added that CPRE is looking forward to more constructive discussions with Ministers to improve the draft planning framework: *'But the changes required are likely to be so far-reaching that there should be a further brief consultation on a substantially revised*

...continued from previous page

draft.’ While the Government’s initial consultation has ended, CPRE will be keeping up the pressure for better protection for the countryside we all love.

Can 1,000 pages of planning policy built up over many years be condensed into just over 50?

That’s what the Coalition Government set out to do in its draft NPPF, published in July.

It is the biggest upheaval to the planning system in half a century.

The draft immediately caused a storm of protest amongst conservation and environmental groups because of its lack of protection for our countryside and green spaces.

Crucially, recognition of the intrinsic value of ‘ordinary’ countryside (about half of England) has been dropped in the draft version of the document.

The NPPF fails to spell out what ‘sustainable’ actually means

CPRE and other organisations have been vocal in calling for this to be reinstated in the final version, as well as demanding stronger policies to protect Green Belt land and other specially designated areas.

While promising a ‘*presumption in favour of sustainable development*’, the NPPF fails to spell out what ‘sustainable’ actually means.

CPRE has pushed for the Government to define the term to take full account of environmental limits, rather than

Chris Heaton-Harris MP

AS your member of Parliament, I am here to help you. You can contact me by writing to me at:

**The House of Commons, Westminster,
LONDON SW1A 0AA**

Emailing me at:
chris.heatonharris.mp@parliament.uk

Or phoning me on either:

0207 219 7048

or

01604 859721



promoting economic development over environmental and social considerations.

CPRE is also calling for the NPPF to clearly re-instate the 'brownfield first' policy that requires developers to prioritise building on previously developed land, rather than greenfield.

CPRE campaigners would also like to see the planning system promote policies that support sustainable transport choices, reduce the need to travel and encourage mixed-use developments that are well located close to existing infrastructure.

©Endso

GENERAL PARISH NOTICES

Revised: 27 November 2011

This section is provided to guide you about aspects of living in the village and South Northants District, including legal requirements, for example if you live in the conservation area or are holding an event where alcohol is provided.

BONFIRES Consider your neighbours before lighting a fire. South Northants Council (SNC) says: *'It is not an offence to have a bonfire, but it is an offence to create smoke which is a nuisance to neighbours'*. Warn neighbours in advance; burn only dry material, never rubber, plastics or painted timber; do not burn when there is no wind; check the wind direction and do not burn when wind will carry smoke towards neighbours or roads; do not burn in the evenings or let fires smoulder. Compost if possible. For nuisance bonfires call SNC Environment Dept on 0845 2300 226. Calls are confidential. (See also Garden Waste section)

CHURCHYARD C of E rules state that only fresh flowers may be placed on memorials; wreaths commemorating Christmas or Remembrance should be removed within 3 months; no other items are permitted; no plantings, except spring bulbs. These rules also apply to the parish council (PC) section.

CONSERVATION AREA A map of the village conservation area is on the PC's website.

DOG FOULING SNC Animal Welfare patrol the village. Fixed penalty notices can be issued to anyone seen allowing a dog to foul without clearing up. Use the dog waste bins. To report fouling, call SNC Animal Welfare on 01327 322277

EVENTS: DO YOU NEED A TEMPORARY EVENTS NOTICE? SNC urges anyone organising a function to make sure they submit a ***Temporary Events Notice*** at least 10 working days in advance. The

Notice is needed at any function which may sell alcohol or where there may be music, dancing or entertainment. This includes fêtes, school events, a community club event or a carnival. Application forms are available from the SNC's offices in Towcester (see inside back page) and on-line (www.southnorthants.gov.uk). If you have a query or are unsure if your event needs such a notice call 01327 322177. SNC have a strict policy in complying with the Licensing Act and do not make any exceptions to the 10 working days rule. So if your event is taking place on a Saturday, please make sure that you submit your application by at least the Friday two weeks beforehand. This avoids the risk that the event cannot go ahead as planned.

FIXED PENALTIES SNC can issue fixed penalty fines of £75 for 'Environmental Antisocial Behaviour'. This covers dog fouling, graffiti, fly posting, noise and littering. Please take litter home with you, or put it in the bins. Thanks to residents who regularly pick it up. Drivers 'rat running' through the village, may be responsible for litter in Collingtree Road, Barn Lane, Gayton Road and Rectory Lane. The PC has periodically asked Northants County Council to clear litter from Towcester Road.

ENFORCEMENT OF 7.5 TONNE LIMIT If you see an HGV in the village over the weight limit, note the number, markings, date, time and direction of travel. If possible please take a photo and call the police on 03000 111 222. The limit does not apply for vehicles loading or unloading.

GARDEN WASTE can be composted for future use, taken to a civic recycling site, or can also be added to your green bin and will then be composted to improve agricultural land.

GRAFFITI This anti social behaviour is unpleasant and affects the quality of village life. We remove it from PC property immediately. Evidence is always passed to the Police to find those responsible. If your property is vandalised with graffiti, please do

continued on next page

...continued from previous page

the same. For advice, call SNC Environmental Services on 01327 322347.

MOTOCROSS Noise from motorcycle scrambling is an issue. The PC monitors the number of meetings. When planning permission was initially granted, it was conditional that the organisers could hold up to a maximum 14 events a year including practice sessions. An event means 'a days session', thus a 2-day event counts as 2 events. Legislation by the previous Government may in future permit up to 20 sessions per year. The track has been used since 1986 and ownership passed to the Auto-Cycle union in 2010 when renovations were made to the track - see the article in newsletter 30 (available on the PC's website).

OVERHANGING SHRUBS Please trim plants back from the pavement. You may be causing a nuisance or even breaking the law if you do not.

PARKING Please be considerate particularly in Green Street, High Street, and near the Baptist Chapel and the school.

PLANNING APPLICATIONS The PC is consulted on planning applications but is not a planning authority. It cannot grant or refuse permission. SNC, NCC and West Northants Development Corporation (WNDC) are the planning authorities.

POLICE DEDICATED TEL NUMBER FOR MILTON

MALSOR RESIDENTS: 03000 111 222. If you see anything suspicious which you are concerned about please call the Police immediately on this number. In emergencies continue to call 999. See

also page 8.

RECYCLING BINS - GREYHOUND PUB Extra recycling bins are in the Greyhound car park. Please avoid causing noise to neighbours.

RECYCLING - DOMESTIC South Northants Council has now introduced additional plastic recycling for food containers such as butter and margarine tubs, vegetable trays and food trays. The latest information on what can be recycled is in a leaflet on the PC's website (news for 31 October 2010).

STREET LIGHTS - POTHoles - WATER LEAKS -

ABANDONED VEHICLES - FLY TIPPING Report all problems to our Clerk (p3). They will be logged and reported. If you see anyone 'fly tipping' please take details of the vehicle registration and call SNC Environment Dept Hotline on 0845 2300226.

TREES AND THE VILLAGE CONSERVATION AREA

IF you live in the conservation area: SNC's permission is needed before felling or pruning any trees on your property. Contact SNC Arboricultural Services on 01327 322260

VILLAGE PARK - DOGS AND ALL MOTORBIKES

ARE BANNED SNC has banned these, including mini-motorbikes. Notices are at both entrances. People seen riding mini motor bikes in the field will be reported to the police who will carry out 'spot checks'. If you see any such bike in the park, contact the police on **03000 111 222**. People walking dogs, on or off leads, in the field will be prosecuted. SNC Dog Wardens do 'spot checks'. We ask the co-operation of all dog owners in observing this. If you see anyone walking a dog there, report it to SNC on 01327 322277.

THE MAIN GOVERNMENT WEBSITE gives access to public services you need to use and the information you require including motoring (including road fund licences), employment, health and well-being - see:

www.direct.gov.uk

Covering all Northamptonshire

***NENE DOC OUT OF
HOURS SERVICE***
03336 664 664

Website: <http://nenedoc.co.uk/>

THIS service provides treatment and advice from experienced local doctors and nurses for urgent illness and minor injuries at those times when your local doctor isn't available:-

- Mon - Thu 6.30pm to 8.00am
- Weekend Fri 6.30pm to Mon 8.00am
- Bank Holidays

It is not a substitute for your own surgery. It is for unscheduled care out of hours for urgent conditions which cannot wait until your surgery is next open. Contacts with Nenedoc are relayed back to your own surgery.

03 numbers cost the same to call as geographic landline numbers (starting 01 and 02), even from a mobile. They are also included as part of inclusive call minutes and discount schemes from all major mobile phone and landline operators. Source: OFCOM - see: www.ofcom.org.uk/media/news/2007/02/nr_20070213b

VILLAGE GROUPS

DO YOU BELONG TO A GROUP? *If so help us keep this list up-to-date and tell us if anything needs updating. (Dial code 01604 if none other stated - not needed from the village)*

ART GROUP Meet Wednesday, village hall, 1.30-3.30pm in term time. The group is self help, with regular visiting artist demos and workshops.

Come along and give it a try or tel Marion 859109 or Anne Manson 858326 (email: stuart.manson@btopenworld.com)

BADMINTON Meet Tuesday, village hall 7.15-8.15pm Thursday 2-3pm. If you enjoy badminton or would like to learn and are over 16 years old, Contact Brenda Binks 858452 (35 High Street)

BEAVERS Meet Thursday, Village Hall, 5.45-6.45pm in term time (age 6-8). Contact: Jacky Prigmore 705910

(email: mike-chris_ladd@tiscali.co.uk)

BROWNIES Meet Monday, Village Hall 6.00-7.30pm in term time (age 7-10½)
Contact Christine Ladd (Brown Owl) 705910
(email: christine.ladd@tiscali.co.uk)

CHURCHES Details of local church activities are published in the monthly 'Miltonian' newsletter sponsored by the village churches and distributed to all village homes.

Copy by 16th of the month to Malcolm Deacon, malcolmdeacon@btinternet.com
Details of church activities including services around the main festivals are also in the weekly 'Down Your Way Column' (see p2).

CUBS Meet Wednesday, Village Hall, 6.30-7.45pm in term time (age 8-10½) Contact Peter Brothers 705910
(email: mike-chris_ladd@tiscali.co.uk)

DOG TRAINING 'Dogsbodies' Sunday 11am-1.30pm Fridays 6.15-8.45pm For all dogs.
Contact Dierdre Long 768466
Email dogsbodyes@fastmail.fm

HISTORICAL SOCIETY Secretary John Brice.
Meets 3rd Thursday, 7.30 at Raynsford House every other month from Jan. Contact Malcolm Deacon 858363 Website:

www.miltonmalsorhistory.org.uk and email: hall@miltonmalsorparishcouncil.org.uk

Please see the Village Diary for meetings
MILTON FC has two adult teams plus one for veterans and one for under 17's.

For membership and club hire details:
Secretary, Len Mackintosh 858145

PILATES/YOGA We understand this is no longer active in the village.

SCOUTS Meet Wednesday, Village Hall, 7.45-9.15pm in term time.

Contact Mike Ladd 705910 (email: mike-chris_ladd@tiscali.co.uk)

SHORT MAT BOWLS Meet Village Hall, Mondays and Thursdays (except 2nd Thursdays other than August) 7.30-9.30pm.
For details please contact the secretary, Geoff Mellors, 858588 (37 High Street.)

TENNIS Collingtree Tennis Club's catchment area includes Milton, Wootton, Collingtree Park and Grange Park.

It is a small, friendly club and they are happy to welcome new members, from complete beginners upwards.

For information: Mr Geoff Kershaw, 5 Lake Walk Collingtree, NN4 0NH or see the website:

www.collingtreetennis.co.uk

VILLAGE TRUSTS There are *two*, quite separate, Milton Malsor Trusts, as follows-
Milton Malsor Village Hall Trust:

Secretary John Brice, 21 Rectory Lane

Milton Malsor Village Trust:

Secretary Chris Mair, 11 Milton Court

WOMEN'S INSTITUTE Contact Brenda Jenks.

Email: hall@miltonmalsorparishcouncil.org
Meet 2nd Thursday each month except August, village hall 7.30-9.30pm (NB May and September in Collingtree Church Room).
Please see the Village Diary for meetings. New members are always very welcome.

YOGA BASED STRETCH AND RELAXATION

CLASS Contact Lisa Witheyman who teaches class 3 at Milton School Hall, Wednesdays 6.45-8.15pm. Free trial session. 01604 706516 or email: letyourselfrelax@hotmail.co.uk

VILLAGE DIARY

To include items, please send details to the editor before the Newsletter copy deadline dates shown. Please include: date, time, location, contacts and

costs. Unless otherwise indicated: the WI meet in the village hall and the Historical Society and Parish Council in Raynsford House. Note: see also pages 25 and 27 for groups holding more frequent regular meetings with details of venue and timings and also mobile library time details.

NB please see the *Miltonian* for latest details of all Church Services.

2011

December

- Tue 6 Poors and Barrs Trust
Payments 10am Raynsford House
- Thu 8 WI - Christmastime
- Tue 13 Parish Council Meeting (optional)
- Tue 13 Carol Singing 6-7pm
- Fri 16 Campion closes for Christmas holiday
- Fri 16 Milton Historical Society Christmas Drinks
- Sun 25 *Christmas Day*
- Mon 26 *Boxing Day*
- Tue 27 *Bank Holiday*

2012

January

- Sun 1 *New Year's Day*
- Mon 2 *Bank Holiday*
- Wed 4 Campion re-opens
- Tue 10 Parish Council Meeting
- Thu 12 WI Diabetes
Dr Charles Fox
- Thu 19 Milton Historical Society
Talk on Salcey Forest 7.30pm

February

- Sat 4 Race Night Milton Village Hall
7.30pm - see page 5
- Thu 9 WI "The wireless schoolmaster from 1902" Mrs Patricia Kent
- Fri 10 Campion closes for Half Term
- Tue 14 Parish Council Meeting
- Wed 15 **Spring Newsletter deadline**

- Mon 20 Campion re-opens

March

- Thu 8 WI British Horseracing
Adrian McGlynn
- Tue 13 Parish Council Meeting
- Thu 15 Milton Historical Society
AGM 7.30pm
- Sun 25 British Summer Time begins
- Fri 30 Campion closes for Easter

April

- Fri 6 *Good Friday*
- Sun 8 *Easter Day*
- Mon 9 *Easter Monday*
- Tue 10 Parish Council Meeting
- Thu 12 WI The history of Milton Malsor
Church Rev Malcolm Deacon
- Tue 17 Campion re-opens

May

- Fri 4 Campion closes
- Mon 7 *May Day Bank Holiday*
- Tue 8 Campion re-opens
- Tue 8 Parish Council Meeting
- Wed 9 **Summer Newsletter deadline**
- Thu 10 WI Resolutions
NB at Collingtree
- Thu 17 Milton Historical Society tba

June

- Fri 1 Campion closes
- Mon 4 ***Queen's Diamond***
- Tue 5 ***Jubilee (Bank Holidays)***
- Mon 11 Campion re-opens
- Tue 12 Parish Council Meeting
- Thu 14 WI "Lavenders" NB venue
Cramden Nursery, Kingsthorpe

July

- Tue 10 Parish Council Meeting

VILLAGE SERVICES

TELL the editor if you spot an error, change of time, contact or other details.

DIAL CODE 01604 if none stated.

THE parish council does not recommend preferred companies, organisations or individuals.

INFORMATION in this section changes rapidly. Help us keep this list up-to-date. Revised: 18 August 2011

JASON Journeys Around South Northants - enquiries 237801

LIBRARIES: Hunsbury Tel 702830 Open **Mon-Fri** 9am-6pm; **Sat** 9am-5pm **Mobile Library** Tel 462049 Calls Thursdays every 3 weeks Village Hall 2.05-2.25pm, Raysford House 2.30-2.50pm. Dates when available are published in the village diary

NORTHANTS COUNTY COUNCIL

www.northamptonshire.gov.uk

County Hall, The Lakes, NN1 1AP T: 236236

POST OFFICES The nearest are:

Main Offices (All services)

Open **Mon-Fri** 9am-5.30pm **Sat**

as stated below

NORTHAMPTON DELAPRE Towcester Road, Far Cotton (**Sat** 9am-1pm)

NORTHAMPTON St Giles (**Sat** 9am-12.30pm)

ROADE High Street (**Sat** 9am-12.30pm)

TOWCESTER Watling St (**Sat** 9am-12.30pm)

Sub Post Offices (Do not offer all services)

BLISWORTH VILLAGE SHOP AND POST

OFFICE This is the nearest office. Open: **PO:** **Mon-Fri** 9.30am-1pm 2pm-5.30pm; **Wed** closes 1pm; **Sat** 9am-12.30pm **Shop:** **Mon-Fri** 7am-6.30pm; **Sat, Sun** 8.30am-12.30pm

CAMP HILL POST OFFICE

Hunsbury Hill Road **Mon-Sat** 9am-12.30pm plus **Mon-Fri** 1.30pm-5.30pm

ROYAL MAIL COLLECTIONS

Village **Sundays/Bank Holidays** -

None **Mon-Fri** 5pm; **Sat** 10.30am

Blisworth **Mon-Fri** 4.45pm;

Sat 10.15am

Collingtree **Mon-Fri** 5.30pm; **Sat** 10.45am

Tesco Mereway **Mon-Fri** 5.30pm; **Sat** 12 noon

Northampton St Giles Street (Outside the Guildhall extension) **Mon-Fri** 7.15pm; **Sat**

12.30pm; **Sunday/Bank Holidays** none

Towcester Watling Street **Mon-Sat** 12.30pm



RECYCLING CENTRES From June 2010

Towcester - Old Greens Norton Road (Closed *Tues and Weds*). **Sixfields** - Walter Tull Way (Open every day). Hours: **Apr-Sep** 8.00am-8.0pm; **Oct-Mar** 8.00am-6.00pm every day exc Christmas Day, Boxing Day, New Years Day. Website:

www.northamptonshire.gov.uk (See section for Waste and Recycling)

SAMARITANS Tel: 08457 909090

At 2 St Michael's Avenue, Northampton NN1 4JQ Email: jo@samaritans.org

www.samaritans.org/northampton/

SOUTH NORTHANTS COUNCIL

www.southnorthants.gov.uk

Springfields, TOWCESTER NN12 6AE

General Enquiries T: 01327 322322

Electoral Registration: 01327 322121

TADD: TOWCESTER DOOR-TO-DOOR

Helps keep your health related appointments when no public transport is available T: 01327 810300

E: tadd@btconnect.com

VILLAGE HALL Booking: Caretaker, Margaret Williamson, 4 Towcester Road, 859234. **Village Hall Draw:** David Brogden, 859570

Email: hall@miltonmalsorparishcouncil.org.uk
www.miltonmalsorparishcouncil.or.uk/village_hall

VILLAGE SHOP Services include delivery of newspapers and other publications.

Opening hours: **Mon-Fri** 9am-12.30pm and 2.30pm-5.30pm; **Sat** 9am-noon; **Sun** closed.

OTHER MOBILE SERVICES

Fish and Chip Van Stockwell Way 1-1.30pm: Fridays every other week

Greengrocer (845830) Wednesday: High Street 9-9.30 Friday: Lower Road 10am

Butcher (07759 081444) Telephone orders in advance on Wed 3.30-4.30pm, delivery Friday 10.30am-12.30pm



- Milton Malsor Parish Councillors -

With position and responsibilities. Please address all correspondence to the Clerk - p3

Chairman

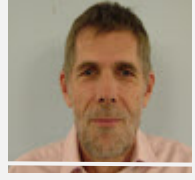
**Finance; Parish Plan;
Web content**

Mrs Brenda W Jenks
Orchard House
17 Orchard Close NN7 3AY



Vice Chairman

Finance; Planning
Brian Sumpton,
Spring Gardens,
Towcester Road NN7 3AE



**Community and
Environment**

Philip East
15 Church Close
NN7 3AJ



**Finance and Trusts;
Community and
Environment**

David Green
1 High Street NN7 3AS



**Community and
Environment; Newsletter;
Web content**

Shaun Hope,
27 Rectory Lane
NN7 3AQ



**Planning; Community
and Environment**

Neil Jagger
1 Milton Court
NN7 3AX



VACANCY
See page 11

**Planning; Community
and Environment**

Roger Pinnock
The Old Barn
Rectory Lane NN7 3AQ



**Planning; Community
and Environment**

Mrs Janet Winchester
April Lodge
27A Lower Road
NN7 3AW



**Clerk to the Parish Council
and Responsible Financial
Officer**

Mrs Ann Addison
Contact details: see p3.



WARDENS Dogs *David Green*; Footpaths *Bob Pyke*; Highways *Philip East*; Trees *John Brice*; *Neil Jagger* Neighbourhood Watch Co-ordinator - *Rebecca White*. **Website Manager:** *Steve Hunt*



OTHER USEFUL CONTACTS



Bernard Ingram - Northants County Councillor for our Division Tel 858489
Mrs Ann Addison (Tel 858226) and **Mrs Janet Eliot** (Tel 830231) - South Northants Councillors for our Ward. SNC, Springfields, Towcester, NN12 6AE Tel: 0845 230 0336
POLICE: 432436, except emergency - FIRE, POLICE, AMBULANCE 999
MP (Daventry): Chris Heaton-Harris, House of Commons, London SW1A 0AA



PARISH COUNCIL MEETINGS



All parish council meetings are at 7.30pm at Raynsford House and open to the public. (Agendas are posted on PC notice board and web site). Next meetings - see diary page 26

◇ Deadline for items for the next edition: Wednesday, 15 February ◇